



SPACE SAVING PIT-LESS LIFT SOLUTION
Designed with Swedish Ingenuity



PROVIDING SO MUCH with SO LITTLE

Cibes Lift is the world's leading developer and supplier of screw driven lifts, providing space saving and pit-less platform lifts or cabin lifts solutions to blend into any type of buildings ranging from public buildings, commercial building or private homes.

A versatile and compact lift system that require so little space and minimum structural provisions, thus enabling the lift to be easily installed and blended-in a new or existing building.



ATTRACTIVE DESIGNS TO MATCH & BLEND

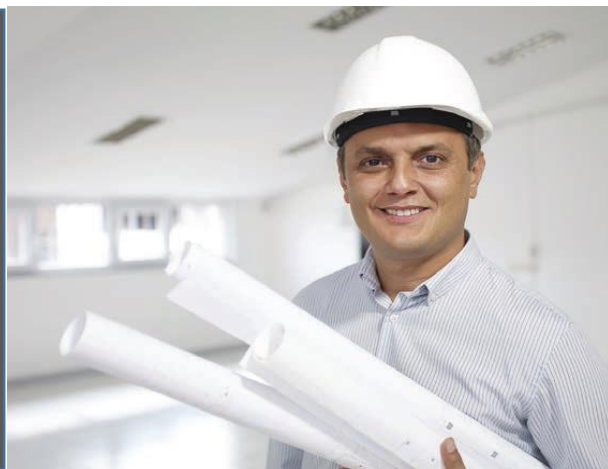
Cibes Lifts combine reliable technology with elegance and simplicity that has become a trademark of Scandinavian design.

Whether it is a platform lift in glazed integrated lift shaft or fully enclosed cabin with mirror and attractive lightings, it fits into all environments and appeals to the designers as well as the lift users.

PLANNING & DESIGN

Cibes Lifts products are designed to combine ease of use with attractive appearance and cost-efficiency.

Let us provide our expertise and vast experience to find the most suitable and attractive arrangement for your building design.



Note*: Not applicable to A6000



VERSATILE SYSTEM in Small Packages

Since all the elements of Cibes Lifts are prefabricated and fully integrated, the installation requires no pit, separate lift shaft* or machine room. Consequently, installation time and building construction work is reduced to a minimum.

The prefabricated lift parts are delivered in small packages that can be easily handled through narrow passages.

ULTIMUM SAFETY

Cibes Lifts provides maximum safety to users and come with a host of safety features in compliance with European Standards.

Tested by Royal Swedish Laboratory, at the weakest point in the drive train, it takes more than 10 metric tons to cause a failure and simply no possibility of a free-fall.



Platform Lift

One of the main advantages of our screw-driven lift is the reduced headroom at the top landing level (Minimum headroom; Platform lift 2.25m, Cabin lift 2.7m).

The robust modular lift shaft enclosure can be finished in a range of different RAL powder coated colours or safety glass.

Swing doors can be equipped with automatic openers as an option while sliding doors for cabin lifts are fully automatic.

The controls on the lifts are ergonomically-designed, simple and disable-friendly with one-touch button operation.

The small footprint and shallow pit requirement (platform 55mm / cabin 75mm) means less excavations and simpler constructions. Can be easily installed in multi-level apartment units.



Cabin Lift

Safe and reliable technology without messy hydraulic systems or bulky rope-pulley mechanism. All driving mechanism and guide rails are smartly hidden with no gaps on the lift shaft wall and no machine room or machinery space required.

When viewed through the lift shaft or door glazing, Cibes Lift systems presents the cleanest and neatest lift pit free of machineries or equipment. The lift pit floor can even be finished with the same flooring materials as the lobby.

Incorporating inverter control for soft start/stop, smooth jerk-free ride, low power consumption, low operation cost and long service life span.



THE SCREW DRIVE MECHANISM offers a smooth and quite lift operation, as a result of more than 70 years long of manufacturing experience, research and development. Cibes products are CE marked and certified by DNV.

The unique driving system offers the highest safety standards and lowest power consumption. Cibes products are registered with BASTA, an organization operated by the Swedish Environmental Research Institute and the Swedish Builders Federation.

Cibes A5000

400kg / 5 persons



Cibes A5000 is the most popular model within Cibes range of products with self-supporting integrated lift shaft provides versatility and plenty of glazing possibilities.

Flexible door arrangements and minimum builder's work.
Applicable to indoor or outdoor application.

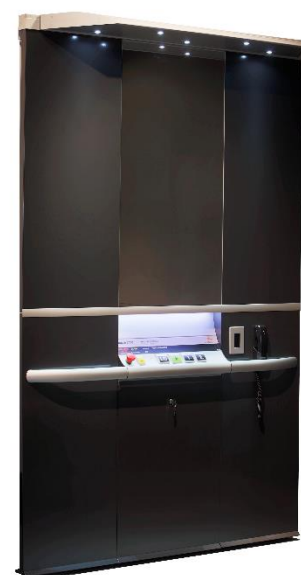


Cibes A7000

400kg / 5 persons



A7000 with LED lighting feature & wall mirror



A7000 with 2.2m vertical back panel



A5000 with 1.1m vertical back panel

The Cibes A7000 model is similar to the A5000 but offers a higher vertical back panel of 2.2m and an attractive over-hang lighting feature with LED spotlights and wall mirror.

The standard A5000 model has a vertical back panel of 1.1m that feature a safety bar and hidden LED lighting strip above the operating panel.



Cibes A4000

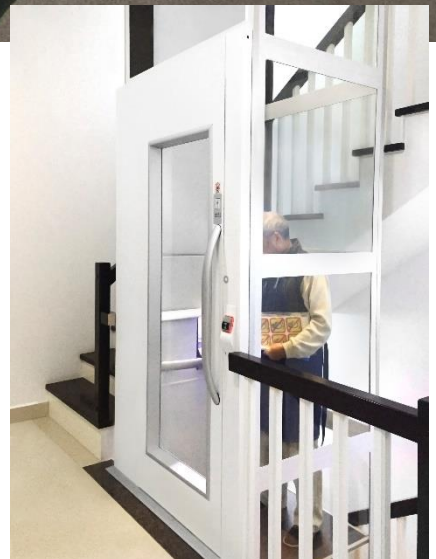
300kg / 4 persons – Home Lift



Cibes A4000 is especially designed for private homes. Compact, flexible arrangement and options to make it blend into your home and complement it. For all kinds of living spaces where there is a need for both freedom and accessibility. Elders need not be confined only to their living quarters on ground floor and can freely mingle around thus improves life quality and increasing value of property.

Can be easily fitted into an existing building with minimal structural modifications.

Require only a cutout size of 1200mm(w) x 900mm(d) to fit in the lift with clear platform size of 800mm(w) x 830mm(d) and door size of 700mm(w) x 2000mm(h).



Compact A4000 model



Dimensions

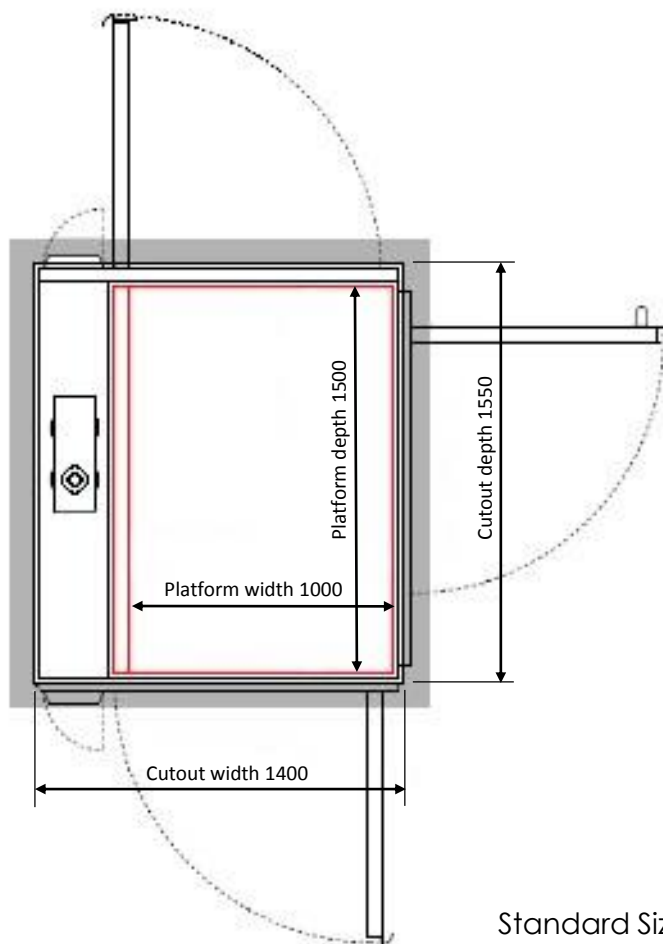
A5000 / A7000

Variants

- S1: Platform: 800mm(w) x 1250mm(d)
Cutout: 1200mm(w) x 1300mm(d)
- S2: Platform: 900mm(w) x 1500mm(d)
Cutout: 1300mm(w) x 1550mm(d)
- S3: Platform: 1000mm(w) x 1300mm(d)
Cutout: 1400mm(w) x 1350mm(d)
- S4: Platform: 1100mm(w) x 1400mm(d)
Cutout: 1500mm(w) x 1450mm(d)
- L1: Platform: 1100mm(w) x 1500mm(d)
Cutout: 1500mm(w) x 1550mm(d)
- L2*: Platform: 1100mm(w) x 1600mm(d)
Cutout: 1500mm(w) x 1650mm(d)

Note: Rated Load 500kg*

Prices of semi-standard sizes are higher than standard sizes



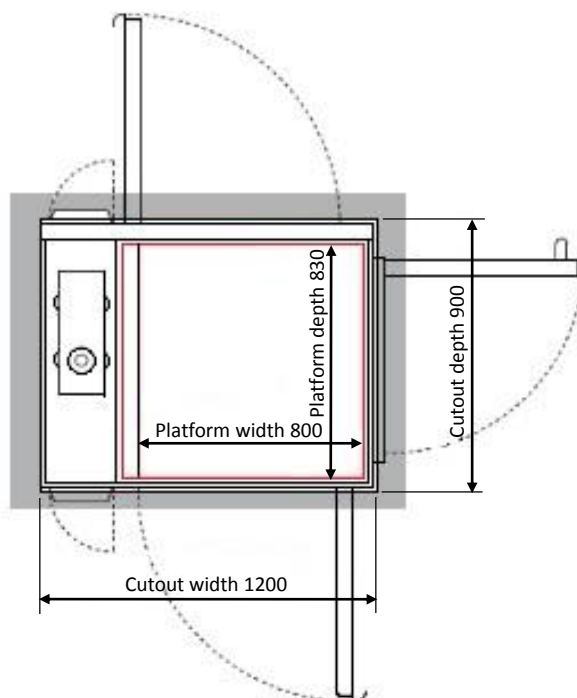
Standard Size

A4000

Variants

- S1: Platform: 800mm(w) x 1000mm(d)
Cutout: 1200mm(w) x 1050mm(d)

Price of semi-standard size is higher than standard size



Standard Size

Technical Specifications






Model	A5000 / A7000	A4000
Country of origin	Sweden	Sweden
Rated load	400kg / 5 persons	300kg / 4 persons
Maximum travel height	13.0m	13.0m
Minimum headroom	2250mm / 2350mm	2250mm
Pit depth	55mm	55mm
Platform size	1000mm(w) x 1500mm(d)	800mm(w) x 830mm(d)
Lift shaft external size	1360mm(w) x 1520mm(d)	1200mm(w) x 860mm(d)
Cutout size	1400mm(w) x 1550mm(d)	1230mm(w) x 890mm(d)
Maximum number of stops	6 stops	4 stops
Speed	0.15m/sec	0.15m/s
Lift shaft enclosure	Standard: Steel powder coated white (RAL 9016) Option: Clear tempered glass with aluminium framing	
Door configuration	Front, through & adjacent openings	
Door type	Standard: Manual swing door with auto closer Option: Automatic door opener	
Clear door size	900mm(w) x 2000mm(h)	700mm(w) x 2000mm(h)
Drive system	Screw-driven with safety nut	
Control system	Micro computer based Canbus system	
Power supply	1ph 230V 50Hz / 3ph 415V 50hz	
Rated motor capacity	2.2kW	2.2kW
Electrical compartment	Integrated into door front	
Emergency lowering device	Battery operated lowering device operated from inside	
Code compliance	EN 81-41 / MD 2006/42/EC	

Platform Fixtures & Finishes



Model	A4000 / A5000 / A7000
Platform carriage	Steel powder coated grey (RAL 9006)
Safety bar	Anodised aluminium
Lighting	Concealed LED lighting strip
Operating panel	Horizontally arranged anodized aluminium faceplate
Operating buttons	Tactile aluminium buttons with Braille markings
Emergency alarm	Alarm buzzer button
Emergency stop switch	Mushroom type, push to stops, twist to release
Communication system	Wall telephone handset
Handrail	Oval profile anodized aluminium
Platform flooring	Black anti-slip vinyl mat / Wood pattern vinyl strips

Landing Door Models

	LANDING DOORS				
Door model					
	A20	A10	A25	AL3	AL4

Lift Model	A5000 / A7000				
Door model	A20	A10	A25	AL3	AL4
Clear opening	900 x 2000	900 x 2000	900 x 1100*	900 x 2000	900 x 2000
Glass size	725 x 1590	90 x 1010	710 x 710	740 x 535 / 935	740 x 1600
Material	Steel			Aluminium	
Finish	Powder coat white (RAL 9016)			Natural anodised	
Operation	Manual swing with auto closer			Manual swing with auto closer	
Door opener	Optional concealed type			Optional external type	
Handle	External anodized aluminium			Integrated into door panel	

Lift Model	A4000				
Clear opening	700 x 2000	700 x 2000	N.A.	700 x 2000	700 x 2000
Glass size	525 x 1590	90 x 1010	N.A.	540 x 535 / 935	540 x 1600
Material	Steel		N.A.	Aluminium	
Finish	Powder coat white (RAL 9016)		N.A.	Natural anodised	
Operation	Manual swing with auto closer		N.A.	Manual swing with auto closer	
Door opener	Optional concealed type		N.A.	Optional external type	
Handle	External anodized aluminium		N.A.	Integrated into door panel	

Cibes A6000

400kg / 5 persons – Cabin Lift



Cibes A6000 is a cabin lift designed to fit into lift shafts provided by builders. Fitted with a 7" LCD level indicator, the spacious and elegant cabin interior with automatic sliding doors offers a most comfortable and pleasant ride.



Suits most buildings with concrete or brick wall lift shaft. Through entrance option is available. LED spotlights with automatic on/off feature is provided as a standard for power saving.

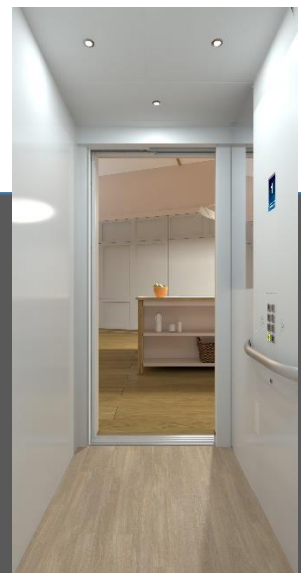
Lift doors are protected with light curtain to re-open or prevent the door from closing if object is detected within the door way.



LED spotlights on the cabin ceiling provides bright lighting with low power usage.

Illuminated soft touch operating buttons provided with Braille markings provided for

Wide range of durable light weight wood pattern vinyl strips floor finishing available for selection to suit.



Cibes A6000S

400kg / 5 persons – Cabin Lift with Integrated Shaft



Cibes A6000S is a cabin lift solution with integrated steel powder coated lift shafts as an alternative to conventional concrete or brick wall lift shaft. The light weight lift shaft enclosure can be easily added on to any type of buildings without extensive structural reinforcements.

It is a perfect cabin lift solution for a wide range of application taking advantage of the shallow pit and low headroom requirements.



A6000 Shaft-less Cabin Lift



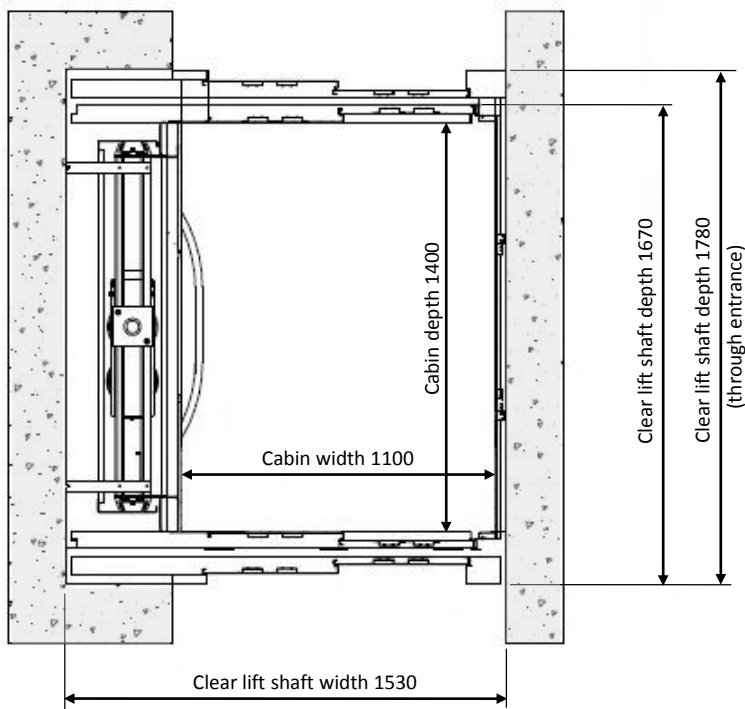
A6000S Cabin Lift with Integrated Lift Shaft

For those who still prefers to have some glazing in the lift, the A6000S model's standard manual swing door is provided with glass panel at every landing while the cabin is equipped with curtain beam safety device.

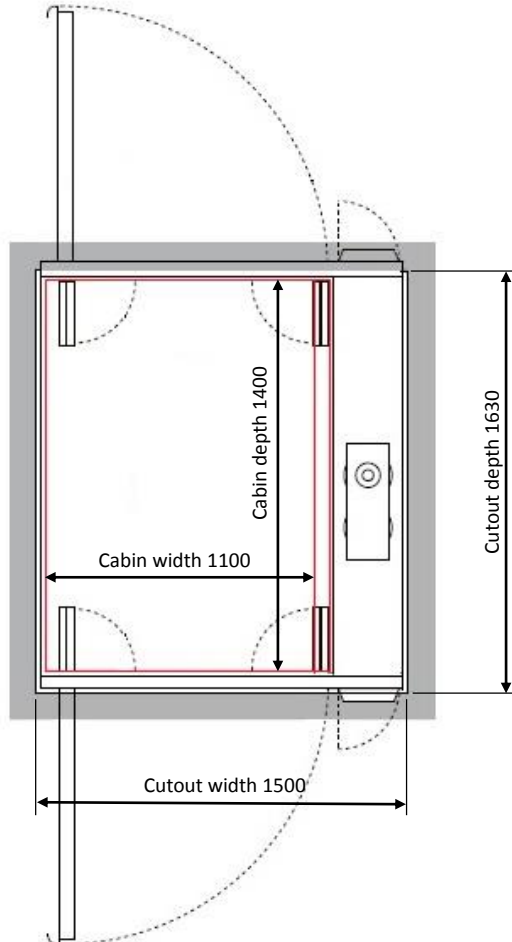
The electrical compartment is incorporated into the bottom floor door front.

Dimensions

A6000 Shaft-less



A6000S Integrated Shaft

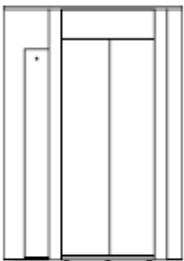
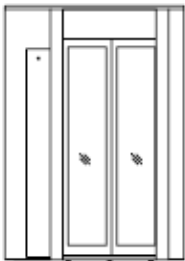
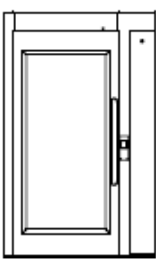
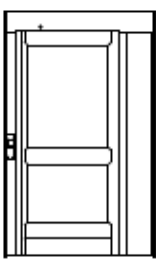
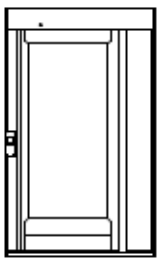


Technical Specifications

Model	A6000	A6000S
Country of origin	Sweden	Sweden
Rated load	400kg / 4 persons	400kg / 5 persons
Maximum travel height	13.0m	13.0m
Minimum headroom	2700mm	2500mm
Pit depth	75mm	75mm
Cabin size	1100mm(w) x 1400mm(d) x 2200mm(h)	
Lift shaft size	Internal 1530mm(w) x 1670mm(d)	External 1460mm(w) x 1520mm(d)
Cutout size	Not applicable	1500mm(w) x 1550mm(d)
Maximum number of stops	6 stops	6 stops
Speed	0.15m/sec	0.15m/s
Lift shaft enclosure	By owner	Steel powder coated white (RAL 9016)
Door configuration	Front & through openings	
Door type	Automatic sliding doors	Standard: Manual wing door Option: Automatic opener
Clear door size	900mm(w) x 2000mm(h)	900mm(w) x 2000mm(h)
Drive system	Screw-driven with safety nut	
Control system	Micro computer based Canbus system	
Power supply	3ph 415V 50hz	
Rated motor capacity	4.0kW	2.2kW
Electrical compartment	Remote mounted	Integrated into door front
Emergency lowering device	Battery operated lowering device operated from inside	



Landing Door Models

Lift Model	A6000		A6000S		
Door model					
	ASO	AS1	A20	AL3	AL4
Clear opening	900 x 2100	900 x 2100	900 x 2000	900 x 2000	900 x 2000
Glass size	Not applicable	2 x 370 x 1910	525 x 1590	540 x 535 / 935	540 x 1600
Material	Steel			Aluminium	
Finish	Powder coat white (RAL 9016)			Natural anodised	
Operation	Automatic sliding		Manual swing with auto closer	Manual swing with auto closer	
Door opener	Standard above cabin		Optional conceal type	Optional external type	
Handle	Not applicable		External aluminium	Integrated into door panel	

Platform Fixtures & Finishes



Model	A6000 / A6000S
Cabin walls	Steel powder coated white (RAL 9016)
Ceiling	Steel powder coated white (RAL 9016)
Lighting	LED spot lights
Car indicator	7" LCD
Operating panel	Vertically arranged & integrated into cabin wall
Operating buttons	Illuminated tactile plastic resin buttons with Braille markings
Emergency alarm	Alarm buzzer button
Communication system	GSM module auto-dialler
Handrail	Oval profile anodized aluminium
Wall mirror	Optional
Car door	Steel powder coated white (RAL 9016)
Door safety	Curtain beam
Platform flooring	Black anti-slip vinyl mat / Wood pattern vinyl strips

Options & Accessories



Lift Shaft Enclosure & Ceiling

Type	
Steel powder coated	Standard
Clear tempered glass*	Optional
Steel powder coated ceiling complete with LED light & fan	Optional

Note: Lift shaft enclosure is not applicable to A6000

Note*: Glass not applicable to A6000S

Standard Powder Coating Colour



Equipment	Standard Colour	Option
Steel door	White (RAL 9016)	Any other RAL colours with additional price
Aluminium door	Natural anodised	
Steel shaft wall	White (RAL 9016)	
Glass framing	White (RAL 9016)	
Platform carriage	Silver grey (RAL 9006)	
Cabin wall & ceiling**	White (RAL 9016)	

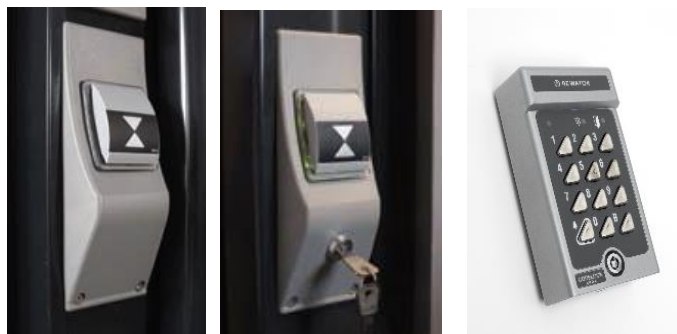
Note**: Applicable to A6000 / A6000S only



Communication System

Type	
Wall telephone	Standard
2-way intercom	Optional
GSM module auto-dialler	Optional

Note: External wiring and subscription of service not included



Access Control

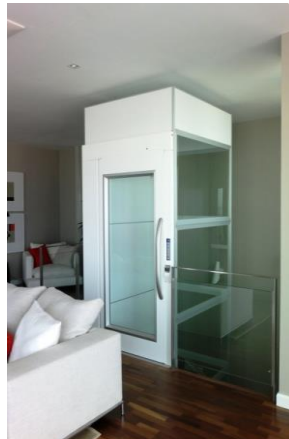
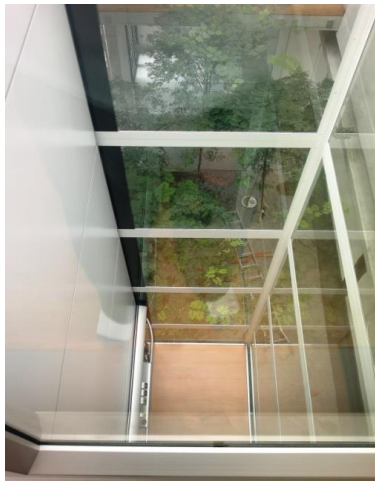
Type	
Landing call button only	Standard
Key-switch on call button	Optional
Key-switch on operation panel	Optional
Key pad code lock on doors	Optional

Disabled-friendly features



Type	
Remote call button	Optional
Level indicator	Optional
Remote elbow call button	Optional
Voice synthesizer	Optional

Examples of Lift Installations



Space Utilisation

Cibes Lifts system has highest space utilisation ratio (total footprint versus usable platform size) compared to other systems.

The compact lift system enable flexible configuration and arrangement to suit most situations and applications.

The most common method of arranging the lift system is to install the lift within the stairs void area which are normally redundant. Even if there is no intention to install a lift at the moment, is important to provide this space in case there is a need in the future.

Cibes' self-supporting lift shaft enclosure can be easily fitted into an existing building with minimum structural works. The whole installation can be completed within days hence minimising inconvenience to residents.



Cibes' pit-less, low headroom and machine room-less feature makes the lift an attractive solution for penthouse or duplex apartment units.

The lift system uses no ropes or counterweight and the lightweight lift system reduces the structural requirement.

Cibes was founded in 1948 in Solna, Sweden. Today the lifts are produced in it's modern manufacturing facility in Gälve, Sweden.

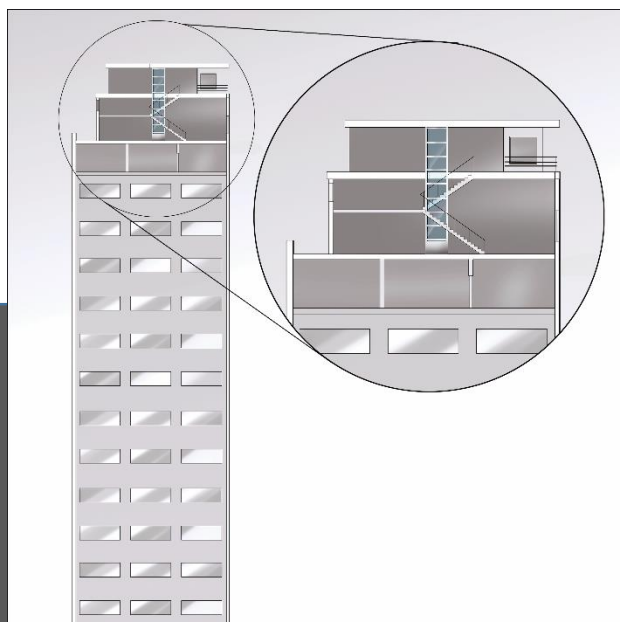
It is the world's leading manufacturer of screw-driven platform and cabin lifts. Cibes' products are exported to more than 50 countries worldwide through 200 distributors globally and subsidiaries in United Kingdom, Netherlands, Finland, Norway and China.



More often than not, excavating a lift pit means destruction and modification of the structural foundation and water proofing system. The shallow lift pit requirements eliminates such costly structural works.

The doors can be provided on the front, adjacent* or rear side and can easily adapts to split-level conditions (short travel distance between landings).

Note*: Not applicable to A6000 / A6000S





BRANCO ACCESSIBILITY SOLUTION (M) SDN BHD having completed and satisfied Cibes Lift's CDP Certified Distributor Program is the certified distributor for Cibes Lifts in Malaysia.

Lifting towards greater heights



BRANCO ACCESSIBILITY SOLUTION (M) SDN BHD

(Company No. 884259-P)

Head office

Lot 129, Jalan Sri Ehsan 7, Taman Sri Ehsan, 52100 Kepong, Kuala Lumpur, Malaysia

Tel: +603-6279 9616 Fax: +603-6279 0616

Branch office (Johor Bahru)

No. 2, Jalan Desa Harmoni, 81100 Johor Bahru, Malaysia

Tel: +607-361 5226 Fax: +607-353 6403

Website: www.brancofibes.com.my

Enquiry: enquiry@branco.com.my